

UMKHOMAZI WATER PROJECT PHASE 1

INFORMATION SHEET – RESETTLEMENT

1. Introduction

The Department of Water and Sanitation (DWS) is investigating the transfer of water from the uMkhomazi River (also known as the Umkomaas or Mkomazi) to the Mgeni River system to meet the long-term water requirements in Ethekeweni, Pietermaritzburg and surrounding areas. A new dam on the uMkhomazi River, on the farm Smithfield approximately midway between the Lundy's Hill bridge and Deepdale, is proposed for this purpose. More background on this major national project can be obtained from the project pamphlet.

Information regarding (a) the very important acquisition of land required for the proposed Smithfield Dam and (b) planning for the resettlement and compensation of people directly affected by the project is given in this document.

2. Land acquisition

The land required for such a project includes the area covered by water up to the Full Supply Level, plus a provision for accommodating floods which pass over the spillway as well as a suitable buffer strip around the stored water for the safe operation of the dam. For reasons of public safety no dwellings may be located within the buffer zone. Refer to the map in **Figure 2** which shows the land within the buffer strip that must be acquired by the DWS.

3. Environmental authorization of the project

An the Environmental Impact Assessment (EIA) is being conducted for the proposed project in accordance with the National Environmental Management Act (NEMA) (Act No. 107 of 1998) in support of an application for environmental authorisation. A socio-economic survey of the people living within the buffer strip around the dam was undertaken in May 2015 as part of the EIA to gather information necessary for a Social Impact Assessment and Socio-Economic Impact Assessment. Implementation of the project can proceed only when all the relevant approvals, including the Environmental Authorization, are in place. Please note that further public meetings will take place at which the findings of the EIA will be presented.

4. Resettlement and compensation of directly affected people

The DWS will comply with all legislation and international best practice standards when relocating people who are directly affected by the project. This could include replacing their dwellings at an alternative locality and re-establishing their lands for food production. Resettlement of people is usually associated with compensation for rights and assets that cannot otherwise be replaced. The Ingonyama Trust Board and the Department of Rural Development and Land Reform will be invited to participate in the development of a resettlement and compensation policy for this project that meets their needs. Some of the key aspects of a resettlement policy are:

- To avoid or minimize adverse social and economic impacts from land acquisition;
- To ensure that resettlement activities are implemented with appropriate disclosure of information, consultation, and the informed participation of those affected;

- To improve, or restore, the livelihoods and standards of displaced persons; and
- To plan and implement the resettlement programme in close cooperation with community leaders, Traditional Authorities and Resettlement Working Groups or similar local structures.

5. Status of the project

A Feasibility Study of the project is now in progress with the purpose of informing decisions such as Ministerial approval for the project to proceed and Environmental Authorization of the development proposals. After these and other strategic decisions, such as funding arrangements, are in place the Implementation Phase can proceed. An outline of the project lifecycle showing the timing of the Implementation Phase is shown in **Figure 1**.

Detailed social consultations with the affected communities will take place during the Implementation Phase of the project when a Relocation Action Plan (RAP) will be developed. The RAP will include arrangements for resettling and compensating each household which has to be relocated as a consequence of acquiring land for the proposed dam.

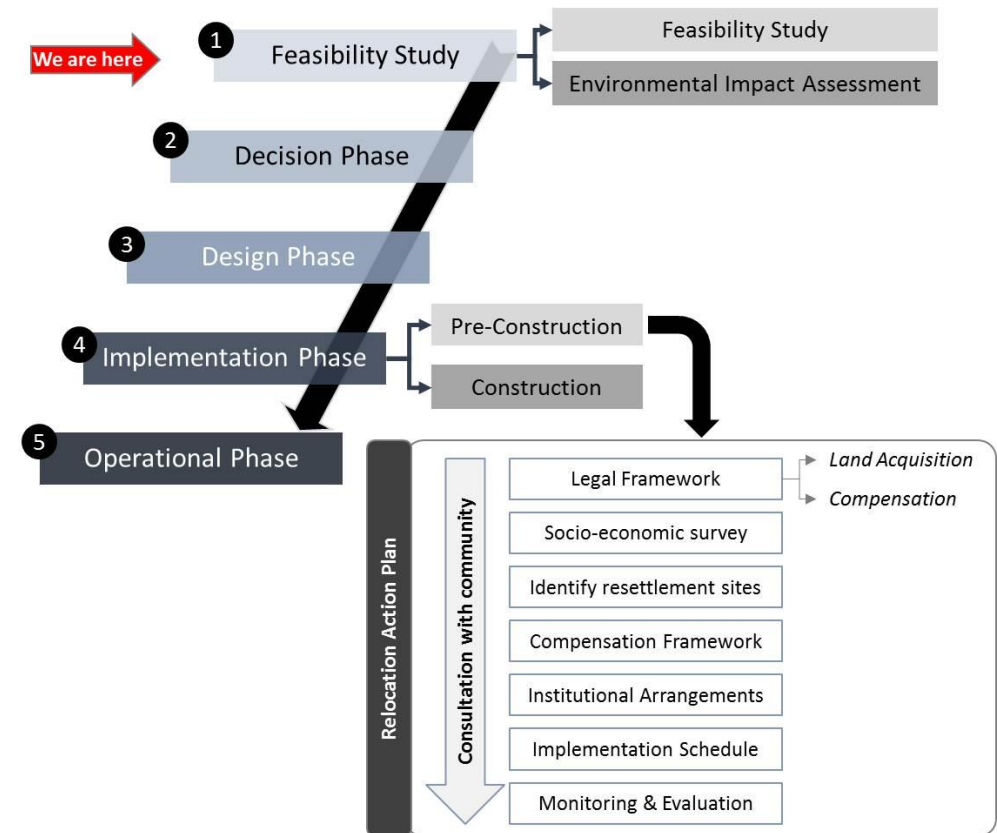


Figure 1: Relocation Action Plan in relation to the Project Life-Cycle

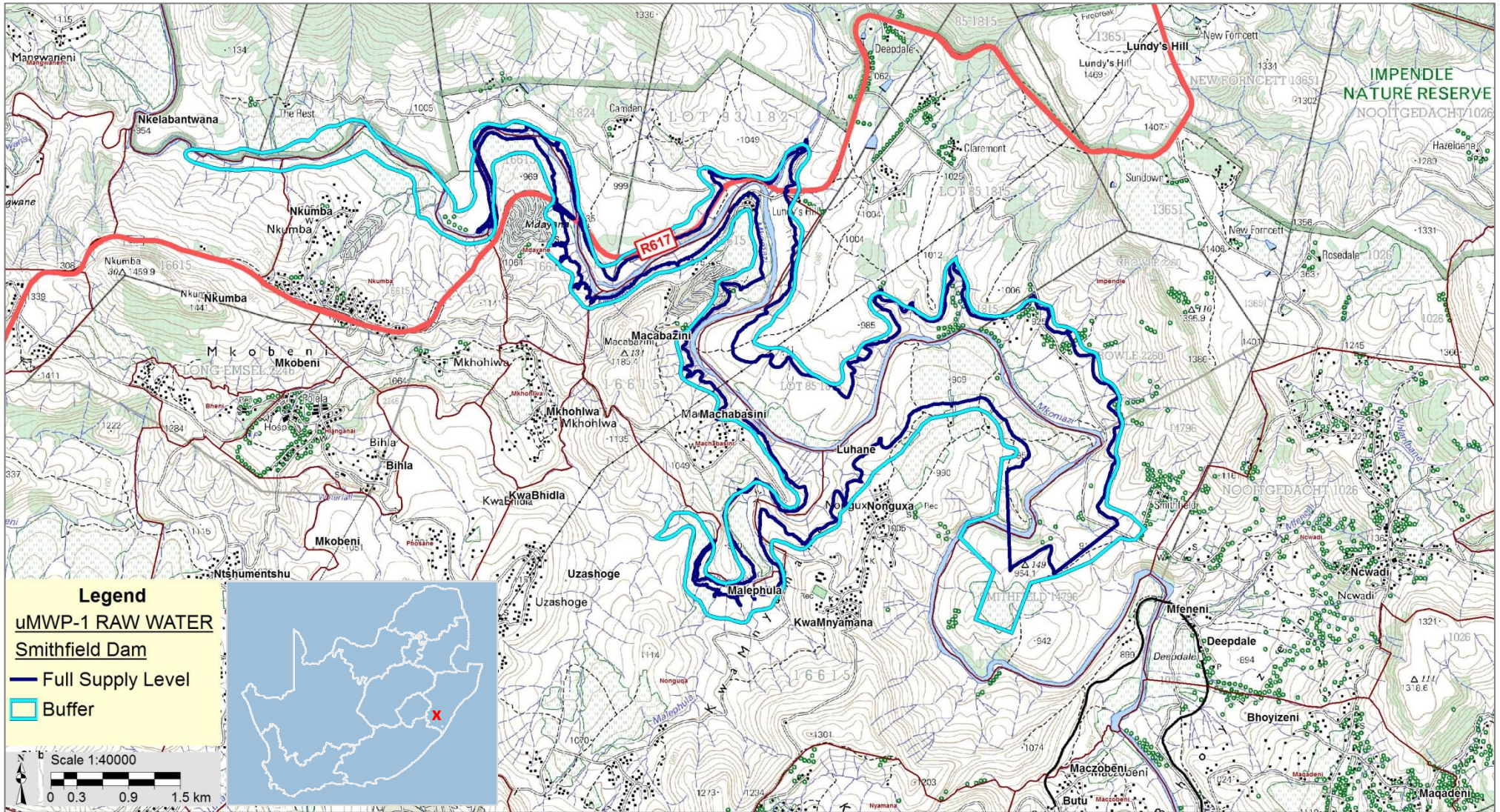


Figure 2: Proposed Smithfield Dam (Full Supply Level and Buffer Zone)

**CONTACT
DETAILS**

Community Liaison:

Bongi Shinga
AECOM
T: 012 421 3767 M: 079 953 8371
E: bongi.shinga@aecom.com

**Environmental Impact
Assessment:**

Donavan Henning
Nemai Consulting
T: 011 781 1730 ; M: 082 891 0604
E: donavanh@nemai.co.za
Postal Address : PO Box 1673, Sunninghill, 2157